

ARCHITECTURE

Built between 1925 and 1929, the Grassimuseum is one of the few larger German museum complexes constructed during the Weimar Republic. For the historic area between the Old Johannis Cemetery and Johannis-Square, Hubert Ritter, Leipzig's head of municipal planning and building, designed an extensive complex in collaboration with the architects Zweck und Voigt. The layout follows the tradition of European palace buildings. The architecture combines a clear, functionally oriented style with the expressive decorative forms of Art Deco – visible in

the roof construction with its "golden pineapple" shape. The pillar hall built in 1927 is the heart of the complex and also follows this zigzag style. The design of the eighteen high windows along the main staircase, which Josef Albers designed in 1926, is committed to the rational aesthetic of Bauhaus.

HISTORY

1874 Opening as the second museum of decorative arts in Germany

1892–1896 Construction of the first Grassimuseum on today's Wilhelm-Leuschner-Platz, funded by the legacy of the Leipzig businessman and patron Franz Dominic Grassi

1920 Founding of GRASSI-MESSE under Museum director Richard Graul

1925–1929 Construction of the new Grassimuseum on Johannisplatz as one of the most modern museum ensembles of the time

1943–1945 Outsourcing of large parts of the collection, severe destruction of the building

1952 Opening of a temporary permanent exhibition in five of once thirty showrooms

1982 Closure of the permanent exhibition due to the progressive decay of the building

1994 Permanent exhibition of a selected collection in five newly equipped rooms

1997 Revival of the GRASSIMESSE as a juried sales exhibition with an international profile

2000–2005 Renovation and modernisation of the Grassimuseum

2007 Reopening with the first tour of the permanent exhibition FROM ANCIENT WORLD TO HISTORISM

2008 Opening of the Special Exhibition areas

2010 Inauguration of the restored Art Deco Pfeilerhalle and opening of the second tour of the permanent exhibition ASIAN ART. IMPETUS FOR EUROPE

2011 Reconstruction of the stairway windows by Josef Albers – the world's largest surface glass design of the Bauhaus

2012 Opening of the third tour of the permanent exhibition FROM ART NOUVEAU TO THE PRESENT

2015 Reconstruction of the historic stairway lights

2023 Opening of the Studio Foyer as a new exhibition space

2024 150th anniversary

The museum is a member of the Conference of National Cultural Institutions.

COLLECTIONS

From the very beginning, the museum's collections of objects extended to all material areas and all eras of European and Asian applied arts. In recent decades, we have expanded the exhibit to include art objects from other parts of the world. Originally supported by the citizens of Leipzig, the collection continues to grow today thanks to the commitment of private donors. It currently includes around 275,000 unique items and pieces from serial production – textiles, fashion, metal equipment, ceramics of all kinds, sculptures, medals and plaques, furniture and interior furnishings, design objects, graphic sheets, book art, photographs etc. Only a fraction of it is on permanent display. However, the museum's special exhibitions always offer new opportunities to bring the collection's treasures to light. In addition to existing publications, our digital museum is becoming increasingly relevant. The museum seeks to make its collection accessible to the public and is gradually digitizing its depot. www.sammlung.grassimak.de



SPECIALIZED LIBRARY

The library offers extensive literature on the history and technology of arts and crafts from early times to the present day. Free entry to opening hours Wednesday and Thursday 1 p.m. to 6 p.m. [OPAC: www.grassimak.de/museum/bibliothek](http://www.grassimak.de/museum/bibliothek)

GRASSI CIRCLE OF FRIENDS MUSEUM OF APPLIED ARTS e.V.

The Circle of Friends, founded in 1991, supports the museum with a strong commitment. They organize visits to artists' studios and multi-day excursions, initiate fundraisers for the museum, and advocate for the museum's interests in the public sphere. The GRASSI Friends also cater to younger audiences and regularly host events. www.freundeskreis.grassimuseum.de

PHOTO CREDITS

1 Roof structure of the Grassimuseum **2** Wine jug, Christian Dell, Bauhaus Weimar, metal workshop, 1922 **3** Vase "Jack-in-the-Pulpit", Louis Tiffany, New York, around 1900 **4** Armchair, design from Peter Ghyczy, 1968 **5** Gallery with works by Piranesi in the permanent exhibition **6** Twelve-part coloured carved-lacquer folding-screen, China, Kanxi-period **7** Blue object, Wouter Dam, Amsterdam, 2004 **8** "Extasy" by Doppeldenk, Leipzig, 2020 **9** Busts "Sebastian" and "Neo", Rosi Steinbach, Leipzig, 2011/12 and 2015 **10** GRASSIMESSE **11** Children in the permanent exhibition **12** Staircase to the permanent exhibition ART NOUVEAU TO THE PRESENT **13** Architectural detail of the Pfeilerhalle **14** Art deco-window in the Studio-foyer **15** César Klein, head of the Europa-Allegory, 1927 **16** Josef-Albers-window in the main staircase



Johannisplatz 5–11 | 04103 Leipzig | +49 (0) 341/22 29 100
grassimuseum@leipzig.de | www.grassimak.de

f i X p e / grassimak

grassi-leipzig.de

OPENING HOURS
Tue, Thu–Sun, public holidays
10 a.m.–6 p.m., Wed 12–8 p.m.,
Closed on Mondays and on 24.12. and
31.12. / Library: Wed + Thu 1–6 p.m.

ADMISSION
Visitors under the age of 18: free
entry for all exhibitions / adults: Per-
manent exhibition free entry; Special
exhibitions* € 8, red. € 5,50 or € 4,
evening ticket (one hour before closing
time) 4 € / On the first Wednesday of
the month € 3 for the entire museum.
*Surcharges and changes reserved

HOW TO GET TO THE MUSEUM
By foot: 5 minutes from the central
Augustusplatz
Tram: No 4, 7, 12, 15
It is possible to park directly on the
side streets Taubchenweg, Prager
Straße, Dresdner Straße or in the
parking garages on Gutenberg- and
Augustusplatz

ACCESSIBILITY
The entrances to the museum are
barrier-free. An orientation map is
available for the visually impaired
and blind. Free media guide are avail-
able as loans as well as on our app.

MEDIA GUIDE
Free of charge and available on
loan at the ticket counter or as an
app. In English, German and simple
language. For art lovers, experts,
children, families, and school classes.
In form of a rally or guided tour. For
those in a hurry and eager to learn,
for the blind and visually impaired.

GUIDED TOURS
Special guided tours in German and
English or with a sign language in-
terpreter are available through prior

arrangement by phone
+49 (0) 341/22 29 101.

RENTAL VENUE
The museum rents out rooms, the
foyers, inner courtyards, and gardens
with the unmistakable ambience for
receptions, conferences, workshops,
private parties etc. Information is
available by phone
+49 (0) 341/22 29 236

MUSEUM SHOP
Books, accessoires, home design,
jewelry, postcards, posters,
ceramics, textiles, toys
Tue, Thu–Sun 12–6 p.m., Wed 12–8 p.m.

CAFÉ IN GRASSI
Weekly menu, lunch, Italian coffee and
cake, outside seating under the trees
in summer. Tue, Thu–Sun, public holi-
days 10 a.m.–6 p.m., Wed 12–8 p.m.
+49 (0) 341/22 29 330
www.cafeimgrassi.de

PHOTOS
Felix Bielmeier, Esther Hoyer,
Simone Möcker, Christoph Sandig,
Alexander Schmidt/ Agentur
Punctum, Helga Schulte-Brinkop

COVER
Art déco-Pfeilerhalle

DESIGN
KOCMOC brand, Leipzig

PRINT
FRITSCH Druck, Zwenkau

Druckprodukt mit finanziellem
Klimabeitrag
ClimatePartner.com/24515-2401-1001

GRASSI

UNIQUE

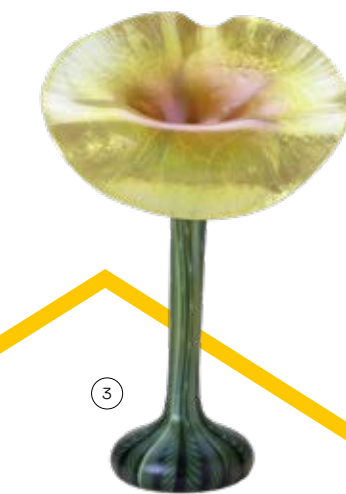
GRASSI
Museum of
Applied Arts
Leipzig

THE GRASSIMUSEUM

The Grassimuseum is home to three internationally renowned museums: the Museum of Applied Arts, the Museum of Ethnology, and the Museum of Musical Instruments. The museum owes its name to the merchant and patron Franz Dominic Grassi (1801–1880). Today's GRASSI Museum of Applied Arts was founded in 1873 as an arts and crafts museum and opened in 1874 as the second German museum of its kind. Supported and promoted by the citizens of Leipzig, it developed from a model collection into one of the most important museums of applied arts.



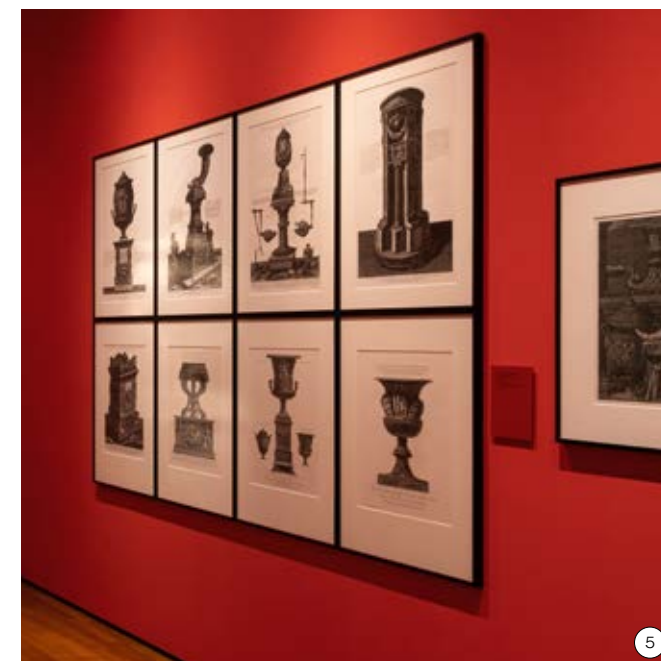
The museum shows changing exhibitions on arts and crafts and design, photography, and architecture and impresses with an artistically appealing permanent exhibition. It seeks to support the scene of artisans and young designers and caters to people of all ages with its discovery tour through 3,000 years of art and cultural history. The landscaped courtyards, spacious foyers, and café also invite visitors to linger and enjoy the art.



THE PERMANENT EXHIBITION WITH THREE TOURS

FROM ANCIENT WORLD TO HISTORISM

The first tour is devoted to historical objects from antiquity to 1900. 2000 square meters of exhibition space with 30 showrooms and smaller cabinets display outstanding objects from Europe's art and cultural history. There is an abundance of pieces made from classic materials such as ceramics and glass. We showcase furniture and wooden equipment, precious and base metals – especially goldsmith work crafted in Leipzig – ornamental and durable tin, scientific instruments as well as textiles. One part of the collection is dedicated to late Gothic carvings and winged altars. The overall theme of the tour is the recurring reception of the Antique on the one hand and the art and cultural history of Saxony within a European context on the other hand. Our aim is to spark curiosity about the origins and transformation of certain shapes, the purpose or use of objects, and the way in which they are embedded into historical context. Another special highlight of this exhibition is a series of historical interior decorations. Interventions with modern contemporary art sharpen our perspective on these historical objects.



ASIAN ART IMPULSES FOR EUROPE

The main part of the museum's collection of Asian art is presented in the pillar hall and two display cabinets that are accessible from there. The display cases in the gallery are dominated by East Asian ceramics and porcelain as well as Japanese sword ornaments and metalwork. The first of the two cabinets is dedicated primarily to lacquer art. Among the most important pieces are a twelve-piece carved lacquer screen from East Asia and a modern lacquer sculpture from Japan. Japanese tea ceremony pots are also on display. The centerpiece of the West Asian cabinet are objects from a collection donated to the museum in 1907 by Philipp Walter Schulz from Leipzig – one of Germany's first researchers to travel to Persia.

ART NOUVEAU TO THE PRESENT

The permanent exhibition ART NOUVEAU TO THE PRESENT extends over two floors and brings together objects from the turn of the century to the present day. The three topics of the upper floor showcase international Art Nouveau – with some exquisite pieces from the Paris World Fair in 1900 – as well as the many manifestations of Art Deco. This is followed by the functionalistic influenced Modernist style, which is particularly visible in the art created by Bauhaus artists. The tour concludes with Scandinavian and German product design from the 1930s and 1940s. The ground floor is dedicated to design after 1945. International impulses, radical breaks, but also the still vibrant Bauhaus tradition dictated design trends during the first decades after the war. Another central theme is the struggle for the so-called "good form" in both East and West Germany. Further focal points of this exhibition are system design from the 1960s and 1970s and the colorful world of the pop era. These designs are juxtaposed with unique pieces from the studio glass and studio ceramics movement. The tour ends in the present with the most recent additions to our collection, which have been purchased at the GRASSIMESSE, our international art fair. In the concluding interactive 360° room installation SENSORY LANDSCAPES, visitors can get active and test the process of designing themselves.



SPECIAL EXHIBITIONS + GRASSIMESSE

The permanent exhibitions are accompanied by a varied program of special exhibitions. We dedicate our special exhibitions to all areas of design and thematize a variety of topics, from historical themes and contemporary design to photography and architecture. The museum's exhibitions are complemented by cooperative projects. Every year at the end of October we organize the GRASSIMESSE. First launched in 1920, it went down in design history as one of the first exhibitions of its kind as a "meeting place of modernity". Since its revival in 1997, it has re-established itself as an international forum for applied art and design. The international artists and designers present a broad spectrum ranging from classic arts and crafts to experimental and conceptual design. The GRASSI Prize awarded on the opening evening are highly coveted awards. The GRASSIMESSE offers visitors a colorful cosmos that invites them to stroll around, learn more about applied arts, and acquire unique pieces.

www.grassimesse.de



EVENTS + CULTURAL EDUCATION

As a place of inspiration and education, the museum offers a wide range of events and projects for all ages and interest groups. Arts and culture enthusiasts get their money's worth, as do design fans and those interested in architecture, photography and design. Visitors can experience the fascinating diversity of applied arts from antiquity to the present day. The museum sees itself as an open space of communication, exchange, education, and individual inspiration. Regular guided tours attract locals and tourists alike – whether they are embarking on a journey through art history or are looking for a short tour about the highlights of our collections. Those exploring the museum on their own can use the media guide or the app in German and English created for different target groups or take part in discussions with collectors, presentations, or workshops. Families like to come to museum festivals, family Sundays and our many cross-generational offers. During the school year, classes of all grades make use of the curriculum-related events of the museum. During the school holidays, the motto is "active vacations!". The museum also offers a wide range of programs for daycare centers and is a popular place to celebrate children's birthdays.

